

ASSEMBLY INSTRUCTIONS



Office Boffins

A-1 PC



G-2 PCS



B-5 PCS



H-4 PCS



38mm

C-8 PCS



20mm

M-1 PC



D-6 PCS



22mm

E-2 PCS

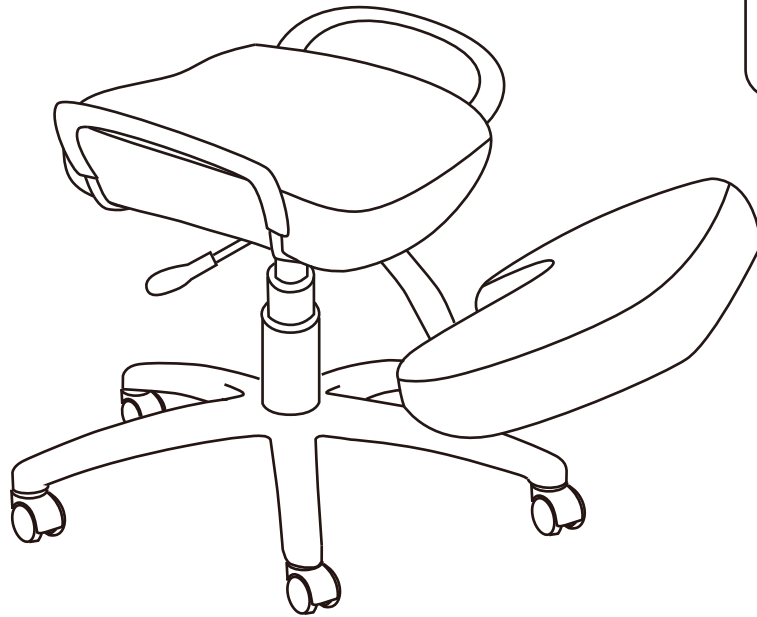


60mm

F-4 PCS



25mm



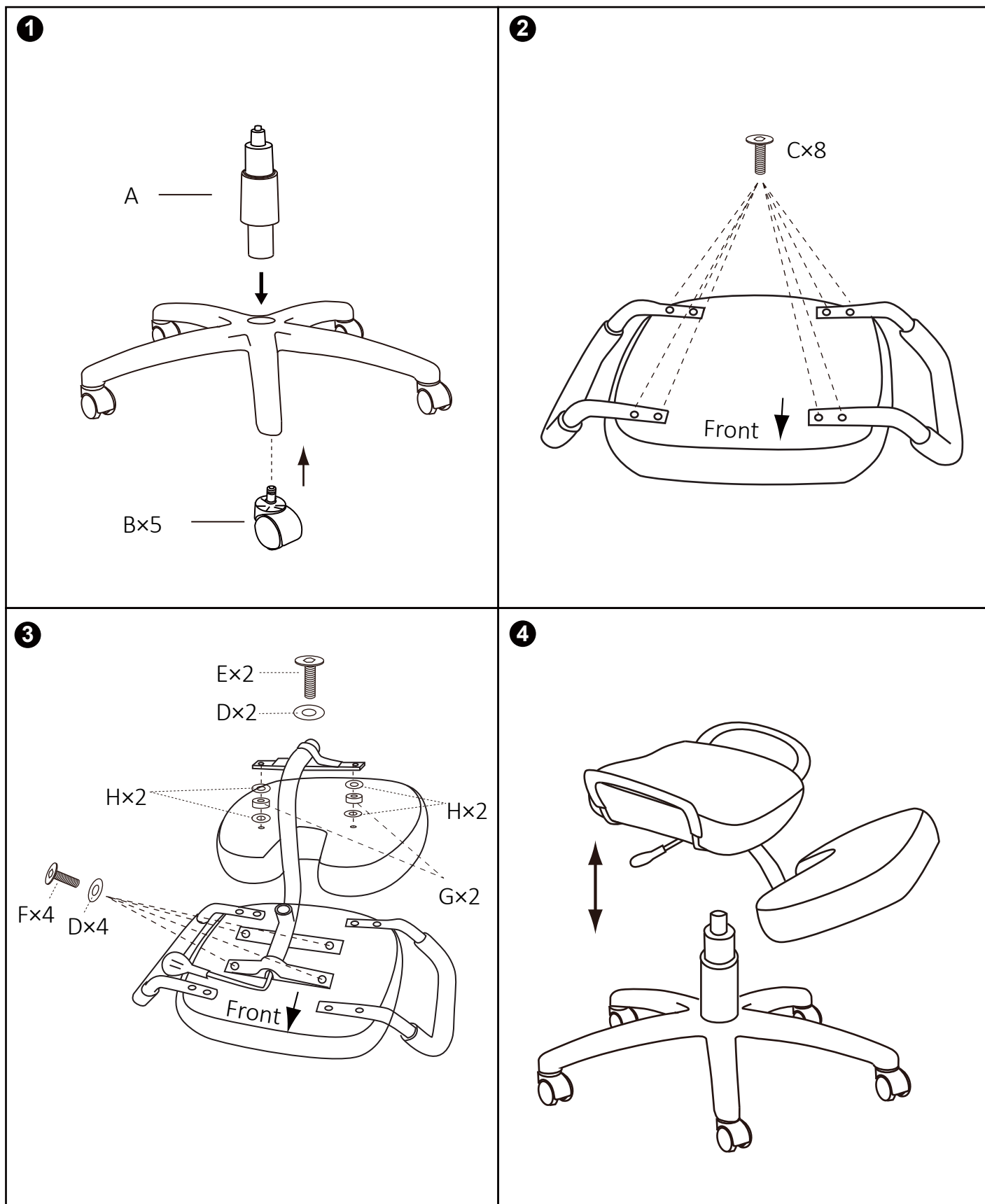
KANG001



Do not tighten bolts fully until you have completed assembly.

DO NOT USE A POWER DRILL TO TIGHTEN THE SCREWS.

TIGHTEN BY HAND WITH THE ALLEN KEY PROVIDED.



WARNING

- DO NOT STAND ON THIS CHAIR.
- DO NOT USE THIS CHAIR AS A STEP LADDER.
- USE THIS PRODUCT FOR SEATING ONE PERSON AT A TIME ONLY.
- DO NOT USE THIS CHAIR UNLESS ALL BOLTS, SCREWS AND KNOBS ARE FIRMLY SECURED.
- AT LEAST EVERY 6 MONTHS, CHECK ALL BOLTS, SCREWS AND KNOBS TO BE SURE THEY ARE TIGHT.
- IF PARTS ARE MISSING, BROKEN, DAMAGED OR WORN, STOP USING THIS PRODUCT UNTIL REPAIRS ARE MADE USING FACTORY AUTHORISED PARTS.
- FAILURE TO FOLLOW THESE WARNINGS COULD RESULT IN SERIOUS INJURY.